



Wildfire and Water Source Protection in New Mexico



New Mexico Forest Industry Association

Behind every healthy forest is a healthy forest industry

A trade association that serves as a voice for New Mexico's industry including thinning contractors, loggers, mills, consultants, and wood products manufacturers.



**The Nature
Conservancy
pursues non-
confrontational,
pragmatic
solutions to
conservation
challenges.**





06/26/2011 19:40

Las Conchas Fire, Day 1



CONCERN #1

Increasing areas of high-severity burn

Photo: Craig Allen, USGS

CONCERN #2:

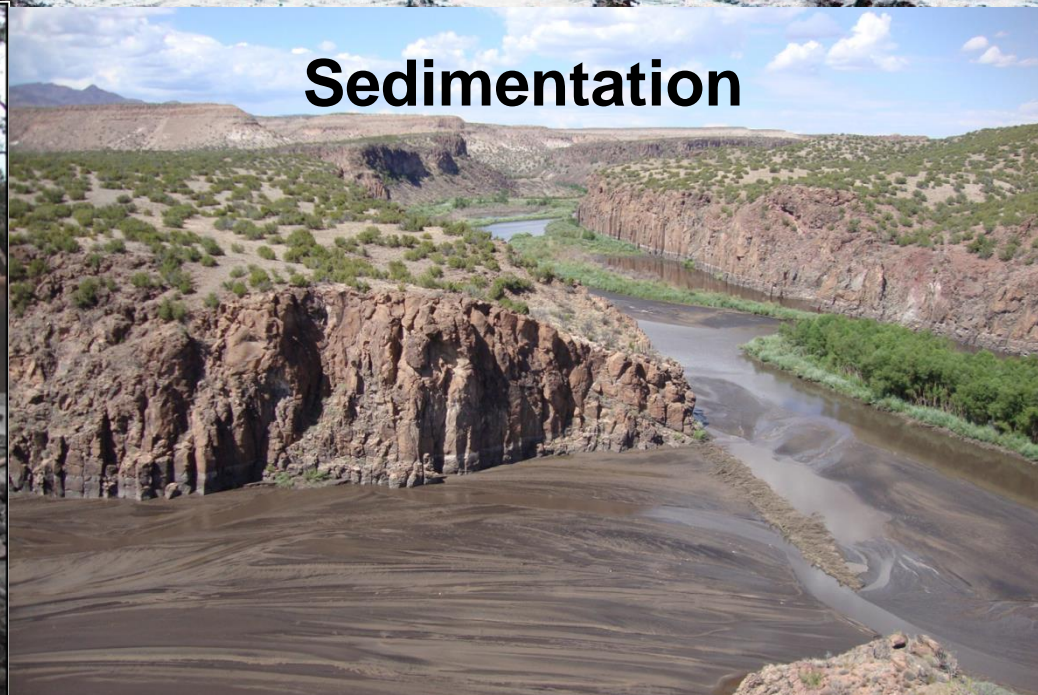
Post-fire flooding and debris flow



Property Destruction



Sedimentation



CONCERN #3: Water Quality



CONCERN #4: Cost



**2011 Las Conchas Fire: Full Cost
\$48 million fire suppression cost
\$138-232 total est. cost of the wildfire**





Proactive Management

Scale-up strategies to meet the scale of the severe wildfire:

1. Thinning
2. Stream restoration
3. Flood mitigation
4. Fire management

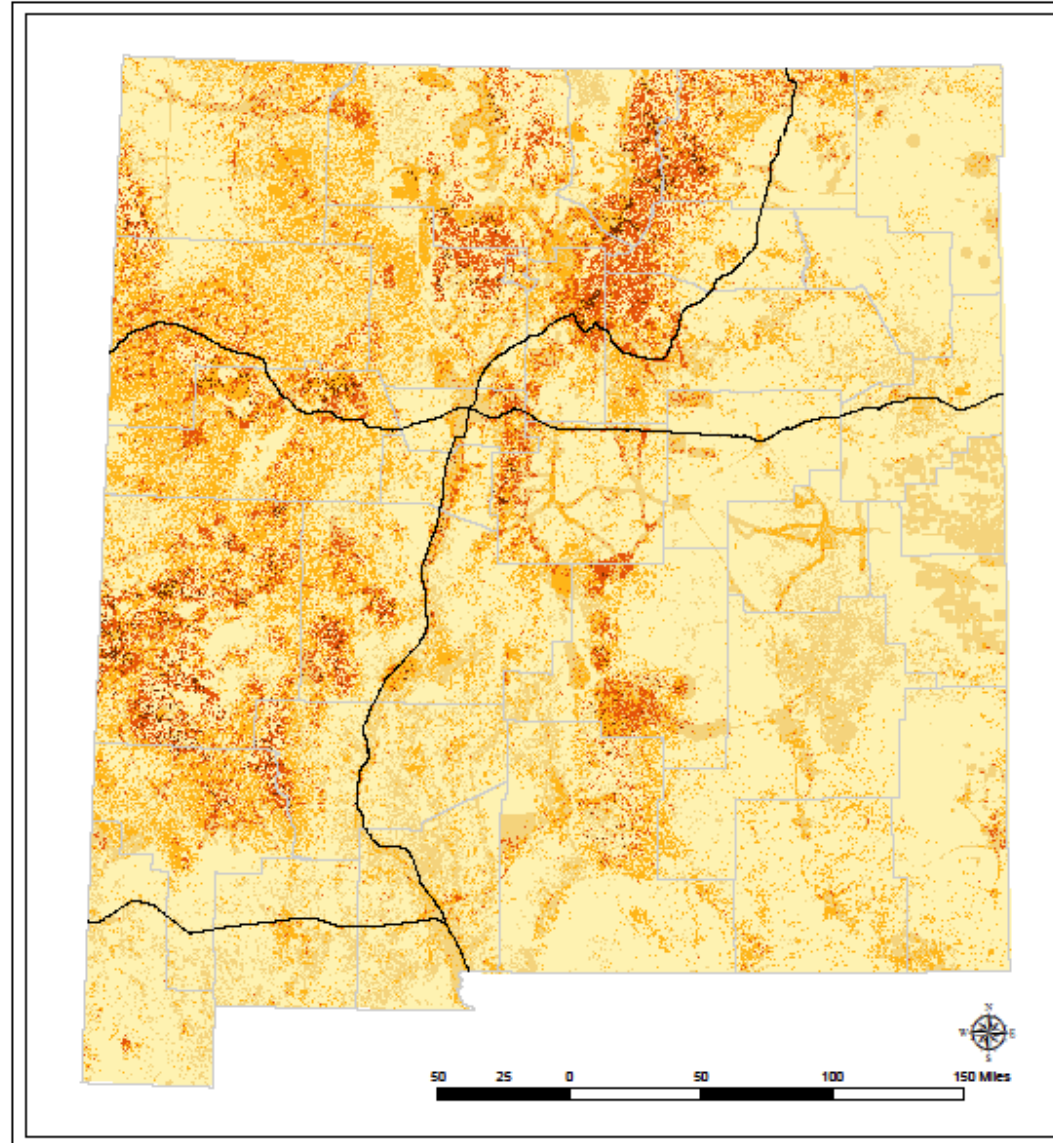




Large Scale Solutions

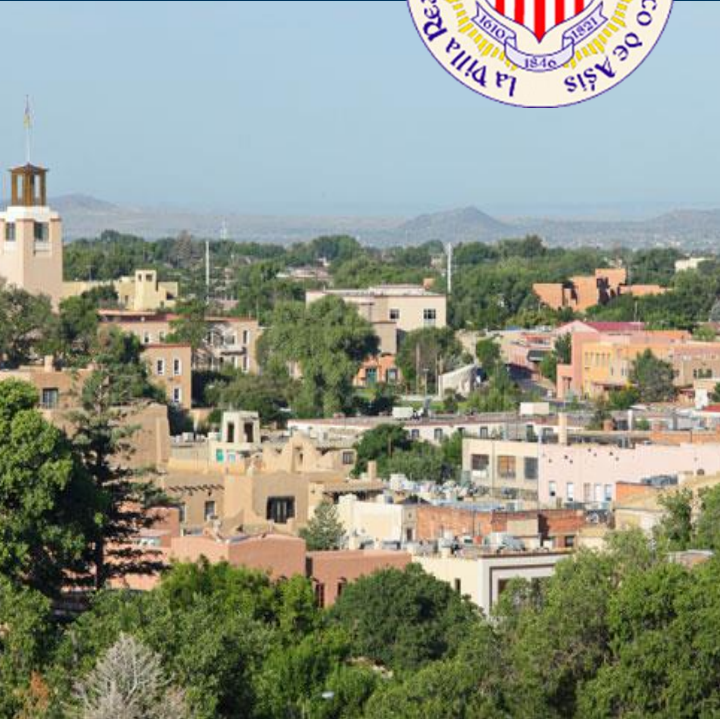
Currently treating
8,000-10,000
acres/year
statewide

Goal of 50,000-
100,000 ac/yr
statewide



Water Fund Model

Downstream
Users



Upstream
Forest



Board

Financial
Fund

\$

\$

CLEAN
WATER



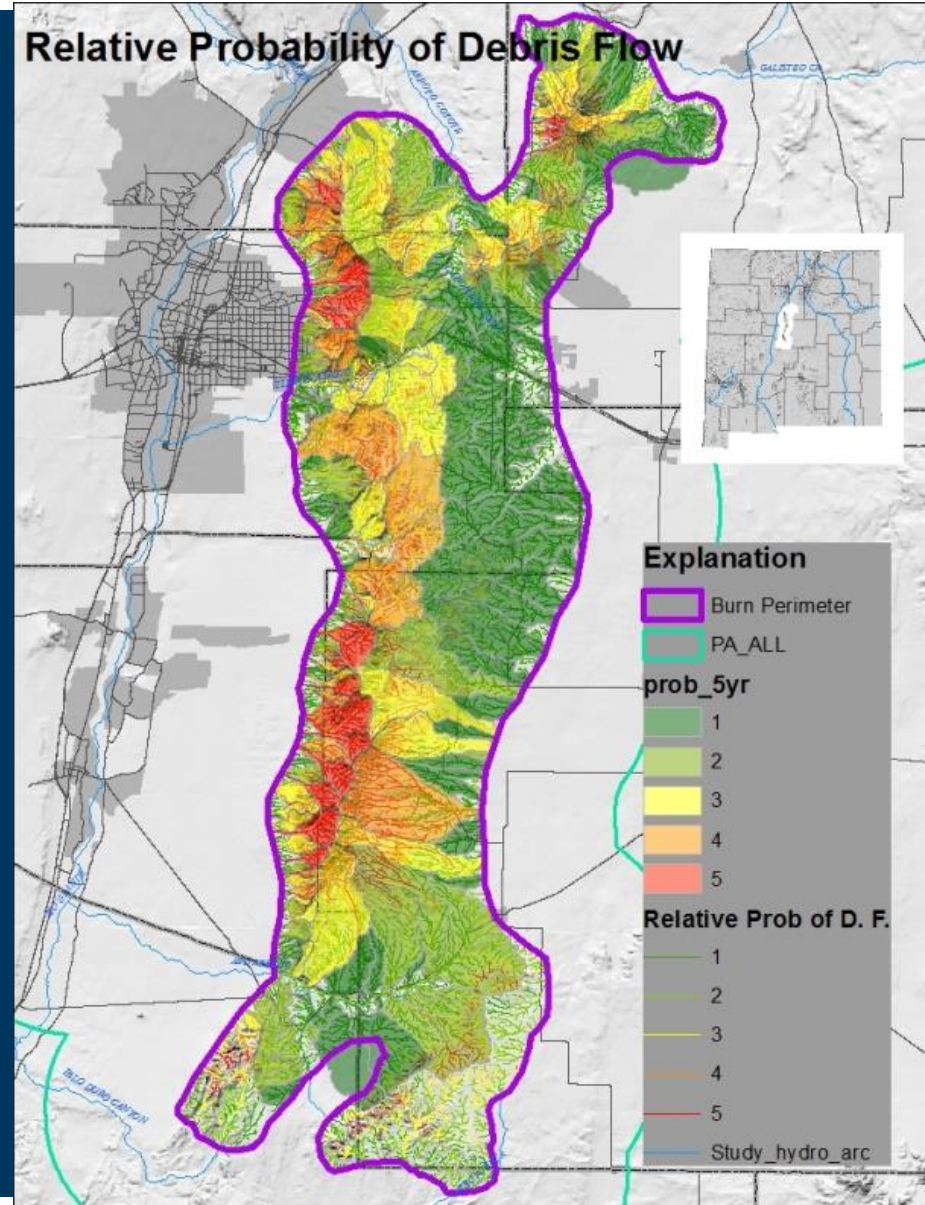
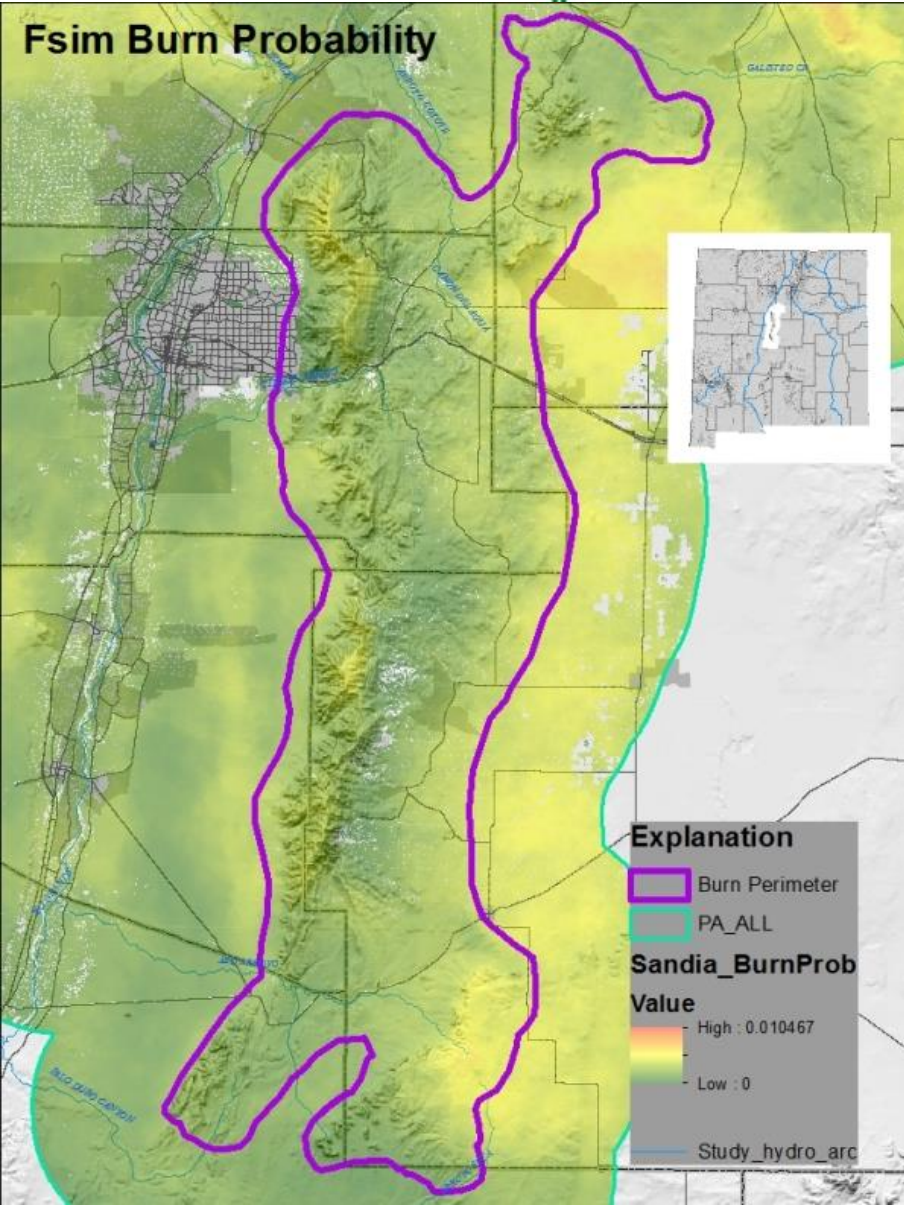
Watershed Studies

- Where are the highest risk forests and streams?
- How much restoration treatment is needed?
- What is the expected water yield?

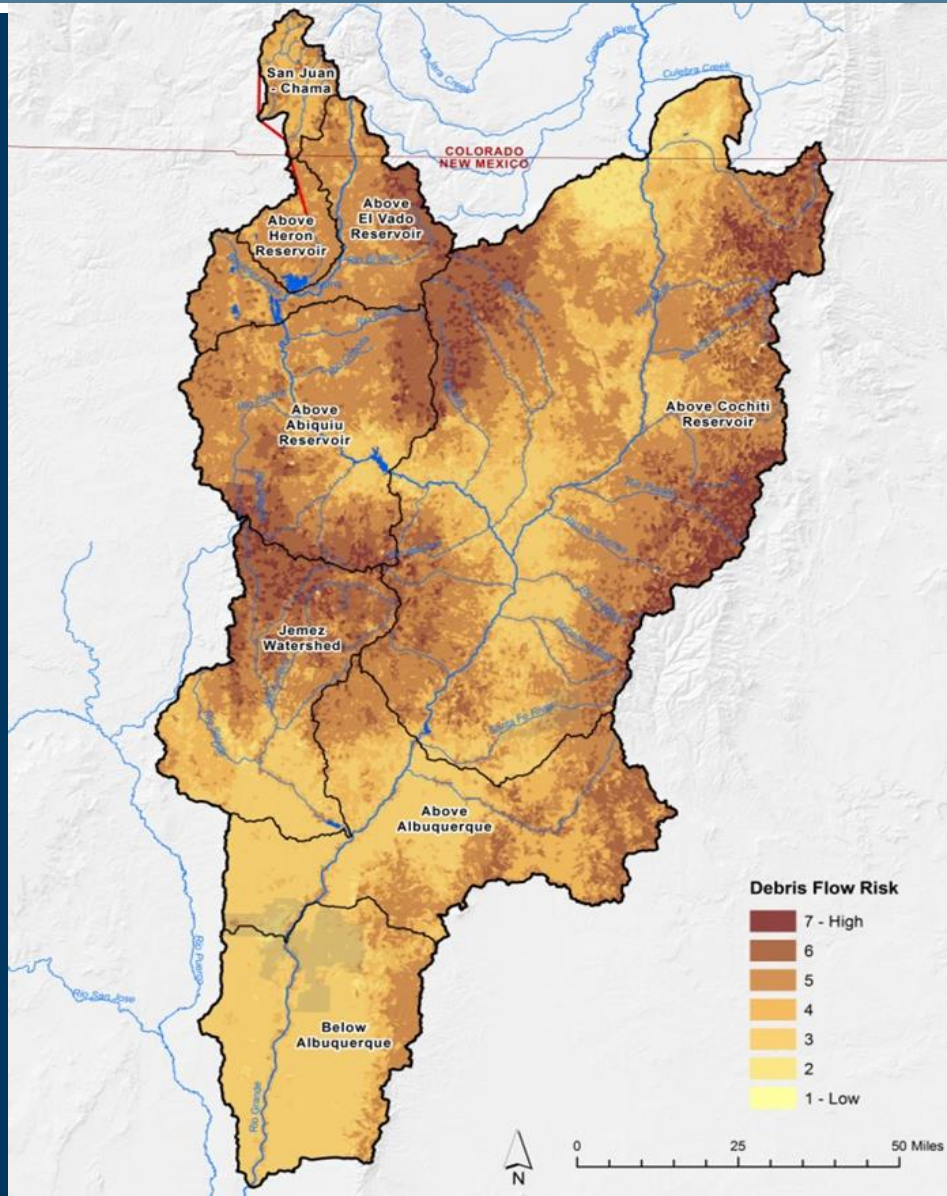
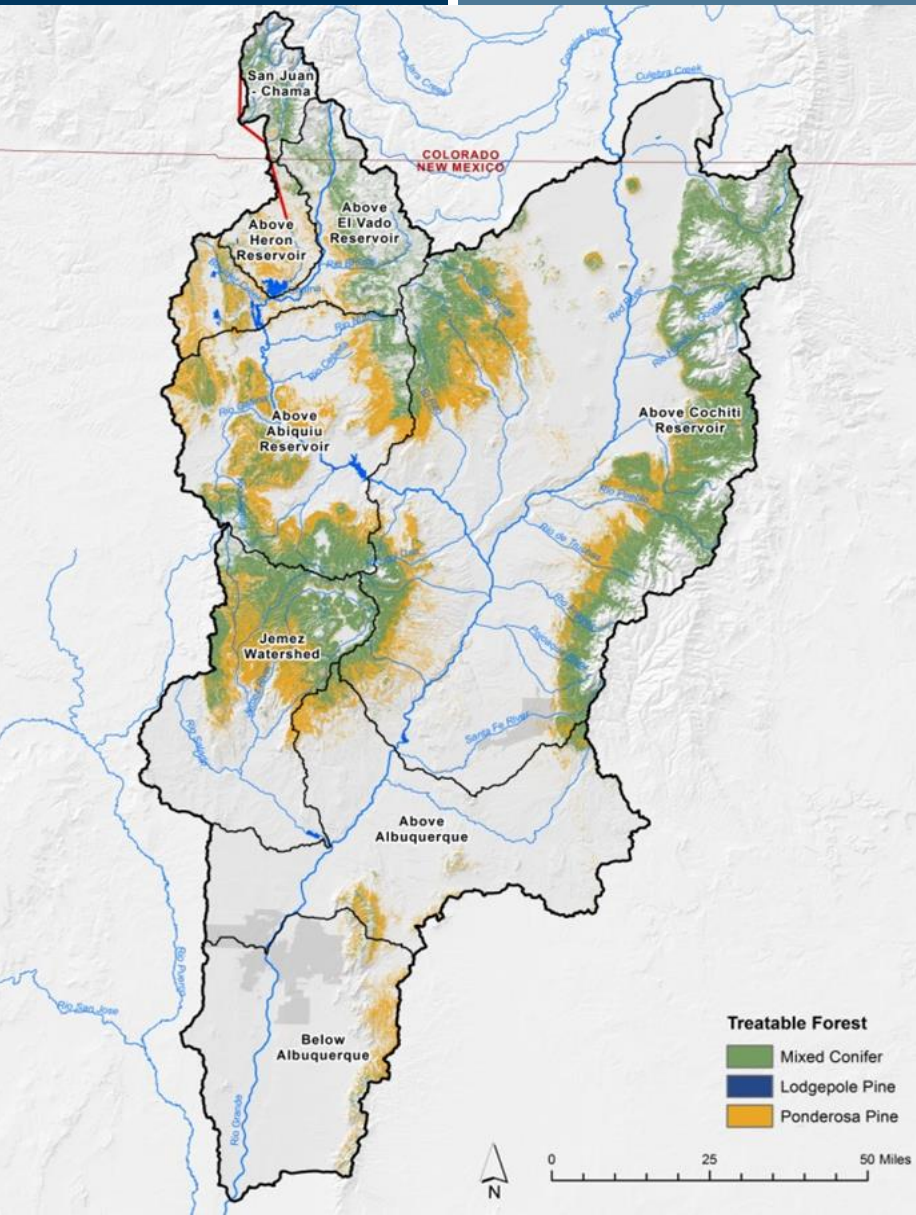




Debris Flow Modeling and Risk Prediction



Treatable Forest and Rapid Assessment of Fire/Debris Flow



Forest Treatments Can Increase Snowpack and Water Yield



- **Thinning can reduce snow sublimation by up to 50% (Veatch et al. 2009)**
- **Winter sublimation in burned areas reduces snowpack by 50% (Harpold et al. 2013)**



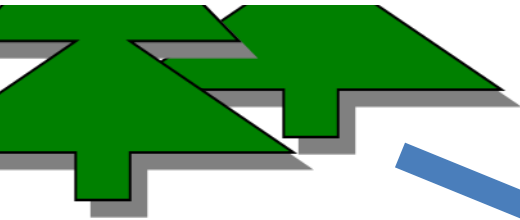
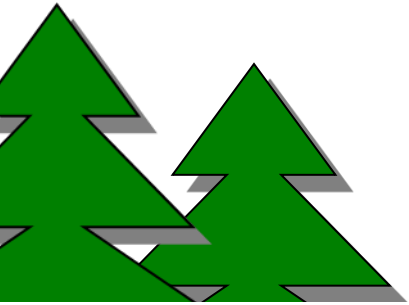


70% of wood by-product of forest treatments is low quality



Conservative volume estimate across forest types: 20 bone dry tons/acre
Job estimate: 300-600 new forest, trucking and wood processing positions

Possible Uses of Low-Quality Wood from Forest Treatments



Thermal Heating/Cooling



Electricity



Biofuels



Mulch and Compost



Shavings, posts and poles



Lumber and SW Construction





Many Diverse Stakeholders

Albuquerque
Bernalillo County
Water Utility Authority
& Buckman Direct
Diversion Project

City Councils, County
Commissioners, NM
Association of Counties

Federal
agencies
USFS
USACE
USGS
BOR
VCNP

State water
agencies ISC,
OSE, NMED

NM Dept. of
Insurance

State forest/watershed
agencies, NMDA
EMNRD/Forestry

NM:
WNR
LFC
PRC

Private Lands, CPLA

Business:
GACOC,
ACI,
NMWBTF,
SFCOC,
NAIOP

NM Acequia Association

NMWDOC

MRGCD,
Farm Bureau &
agricultural users

UNM, EPSCoR
FRI/NMHU,
NMSU

Sandia & LANL

Pueblos

Sportsmen & Conservation Groups
Recreation Users

Corporations with
Sustainability Programs
Lowe's, PNM, Wells
Fargo, Bank of ABQ

Land
Grant
Council



Coordinated, Leveraged, Multi-Partner Solution

- A. Watershed studies – underway with Advisory Board**
- B. Comprehensive plan – draft June to finish 2014**
- C. Water fund launch with demo areas – July 2014**
- D. NM Legislature 60-day Session in 2015 – advance a multi-source funding approach:**
 - 1. Water Fund with donations, water user fees, corporate sponsors
 - 2. State funding such as Wildfire and Water Source Protection Fund (WAWSP) for treatments and economic development
 - 3. Local/municipal/tribal matching funds for treatments
 - 4. Investment in wood-processing infrastructure
 - 5. Federal appropriations for hazardous fuels reduction



- Develop long-term funding plan in 2014 Interim
- Multiple Stakeholders
 - Federal
 - State
 - Local
 - Tribal

underscored material = new
[bracketed material] = delete

1 SENATE MEMORIAL 95
2 51ST LEGISLATURE - STATE OF NEW MEXICO - SECOND SESSION, 2014
3 INTRODUCED BY
4 Phil A. Griego
5
6
7
8
9
10 A MEMORIAL
11 REQUESTING THE NEW MEXICO LEGISLATIVE COUNCIL TO DIRECT THE
12 APPROPRIATE INTERIM COMMITTEE TO DEVELOP A LONG-TERM FUNDING
13 PLAN FOR FOREST AND WATERSHED RESTORATION WORK IN NEW MEXICO.
14
15 WHEREAS, New Mexico needs a large-scale forest and
16 watershed restoration program; and
17 WHEREAS, the urgency of the situation has been established
18 in the New Mexico forest action plan, New Mexico forest and
19 watershed health plan and the federal agency land and resource
20 management plans; and
21 WHEREAS, scientists and stakeholders agree that the
22 current level of active management on forest lands is
23 insufficient to address the scope, scale and pace needed to
24 restore these forests to a more resilient condition; and
25 WHEREAS, uncharacteristically large and intense wildfires
196220.1